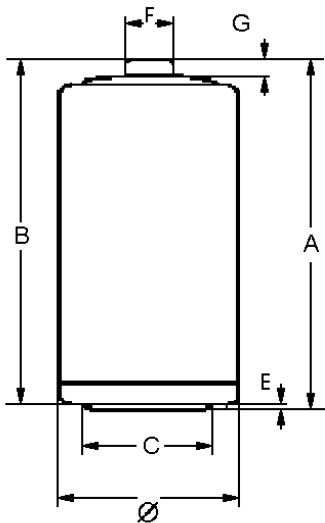


Type Designation	4020
Designation IEC	LR20
System	Zn-MnO ₂ (Alkaline)
Shelf Life (Coding)*	5 years
Nominal Voltage [V]	1.5
Typical Capacity C [mAh]	16500 (discharge with high-resistance)
Permissible Temperature Range	- 10 °C ... 50 °C
Weight, approx. [g]	141
Volume [ccm]	51.3



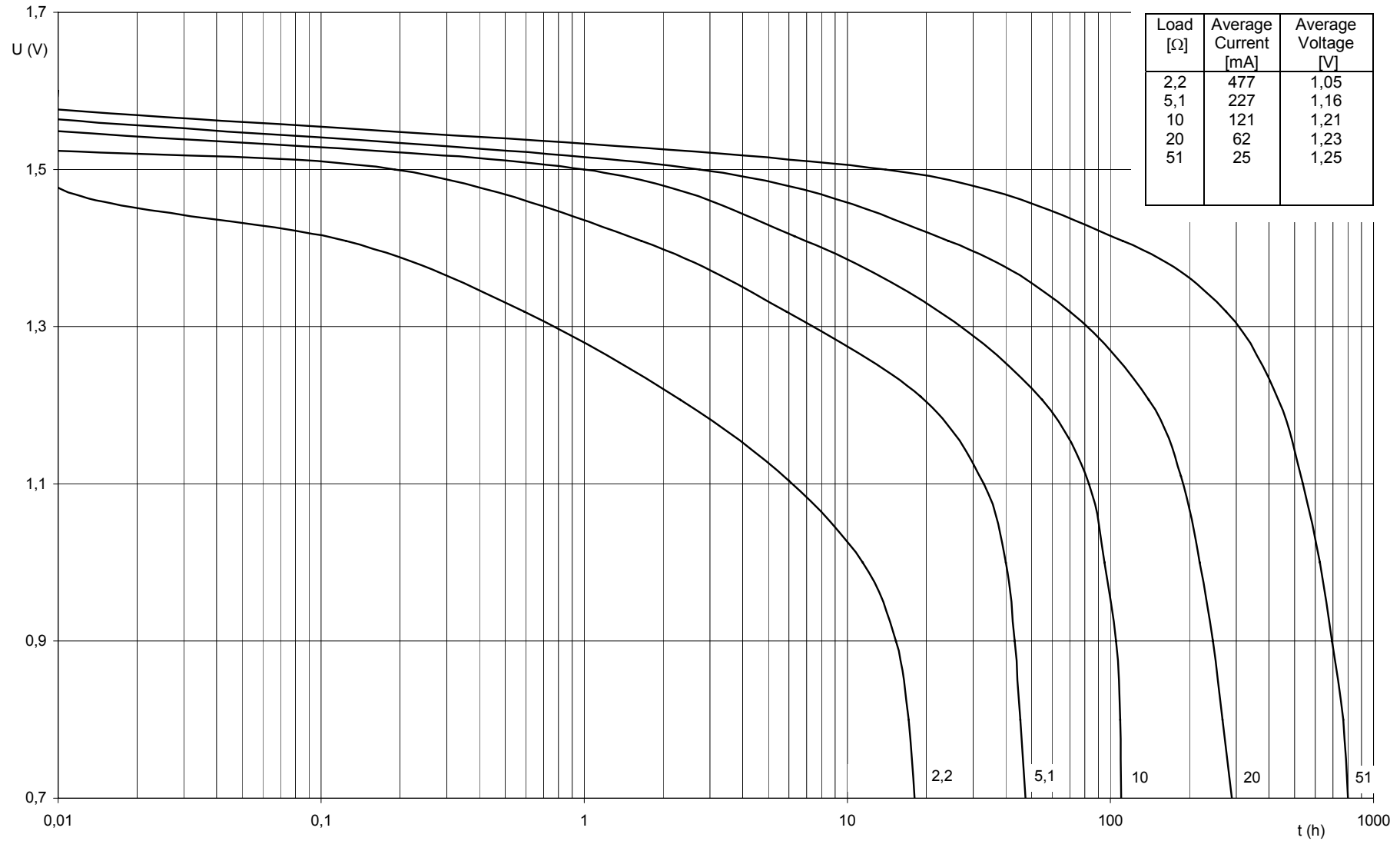
Dimensions [mm]	min:	max:
∅	32.3	34.2
A	-	61.5
B	59.5	-
C	18.0	-
E	-	1.0
F	-	9.5
G	1.5	-

Typical Capacities (at 20°C)

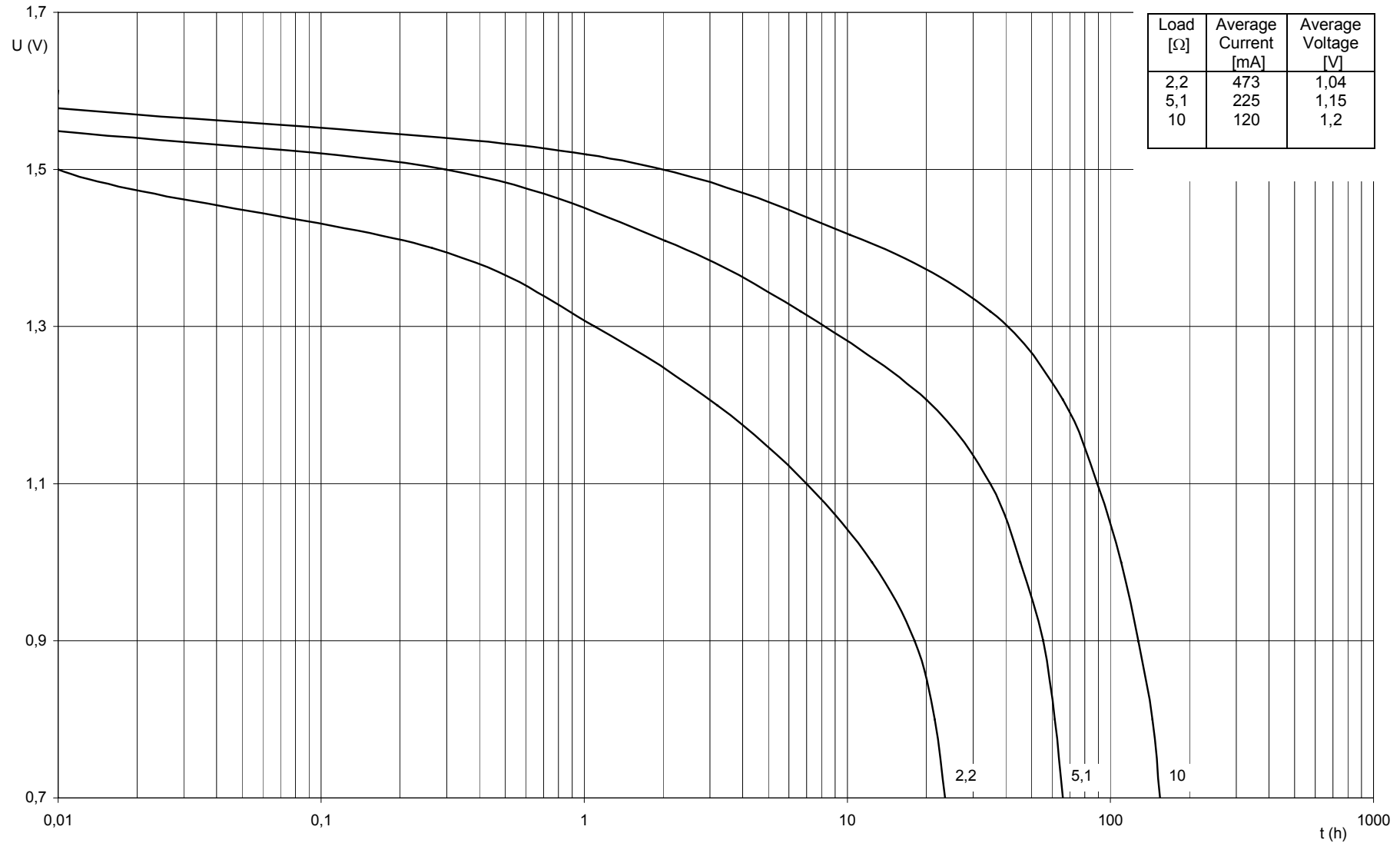
Discharge Type	Load	End Voltage[V]	1.0	0.9
4M/H,8H/D,7D/W	2.2 Ω	Time [m]	1280	1535
		Capacity [Ah]	11.65	13.65
		Energy [Wh]	14.05	16.25
Discharge Type	Load	End Voltage[V]	0.9	0.8
1H/D,7D/W	2.2 Ω	Time [h]	23.85	27.20
		Capacity [Ah]	12.10	13.35
		Energy [Wh]	13.65	14.75
Discharge Type	Load	End Voltage[V]	1.0	0.9
1H/D,7D/W	3.9 Ω	Time [h]	40.50	45.50
		Capacity [Ah]	12.50	13.80
		Energy [Wh]	15.25	16.45
Discharge Type	Load	End Voltage[V]	1.0	0.9
4H/D,7D/W	10 Ω	Time [h]	114.50	130.10
		Capacity [Ah]	14.30	15.80
		Energy [Wh]	18.05	19.45

* In consideration of typical loss of capacity at storage and application.

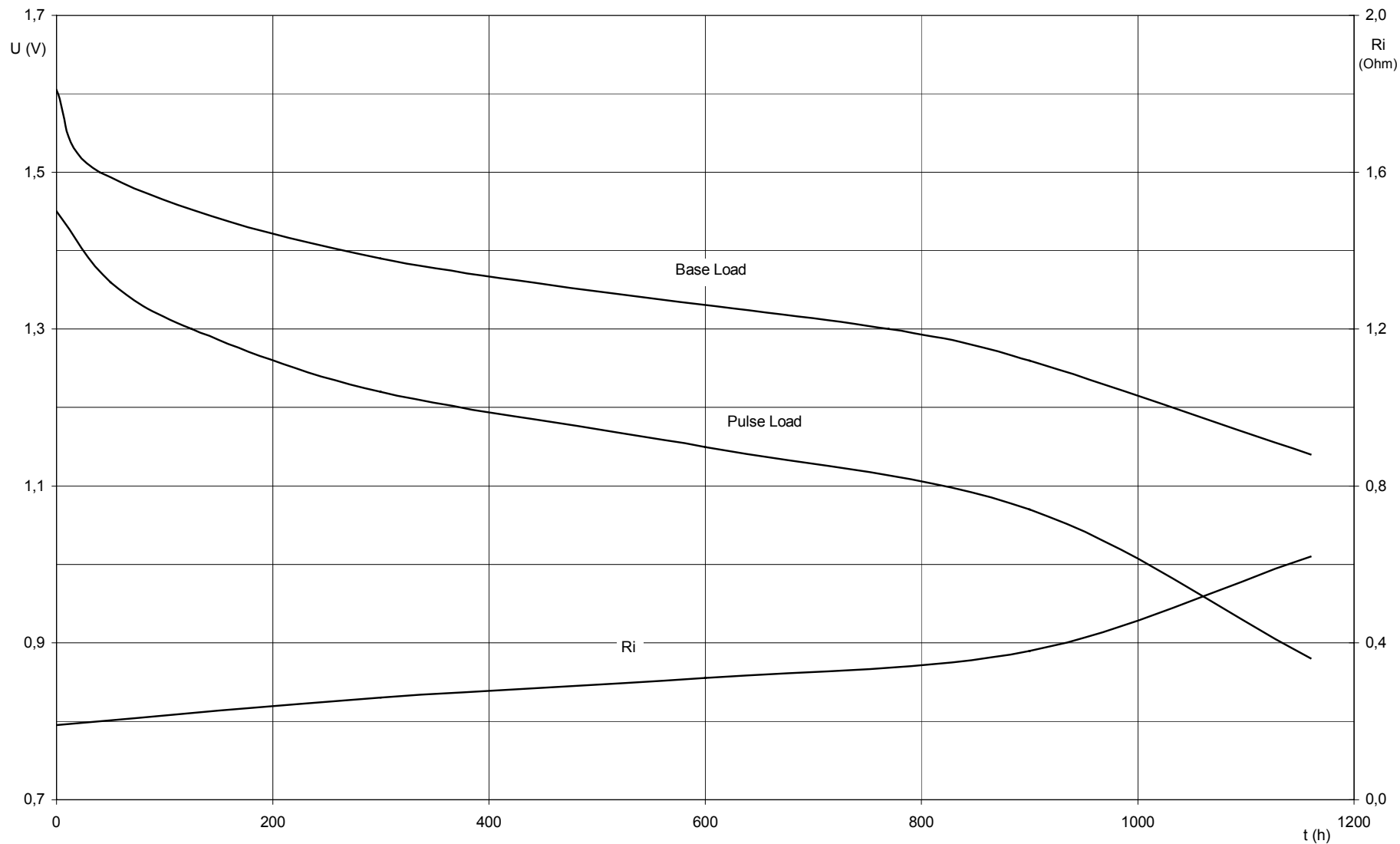
Continuous 24h/d



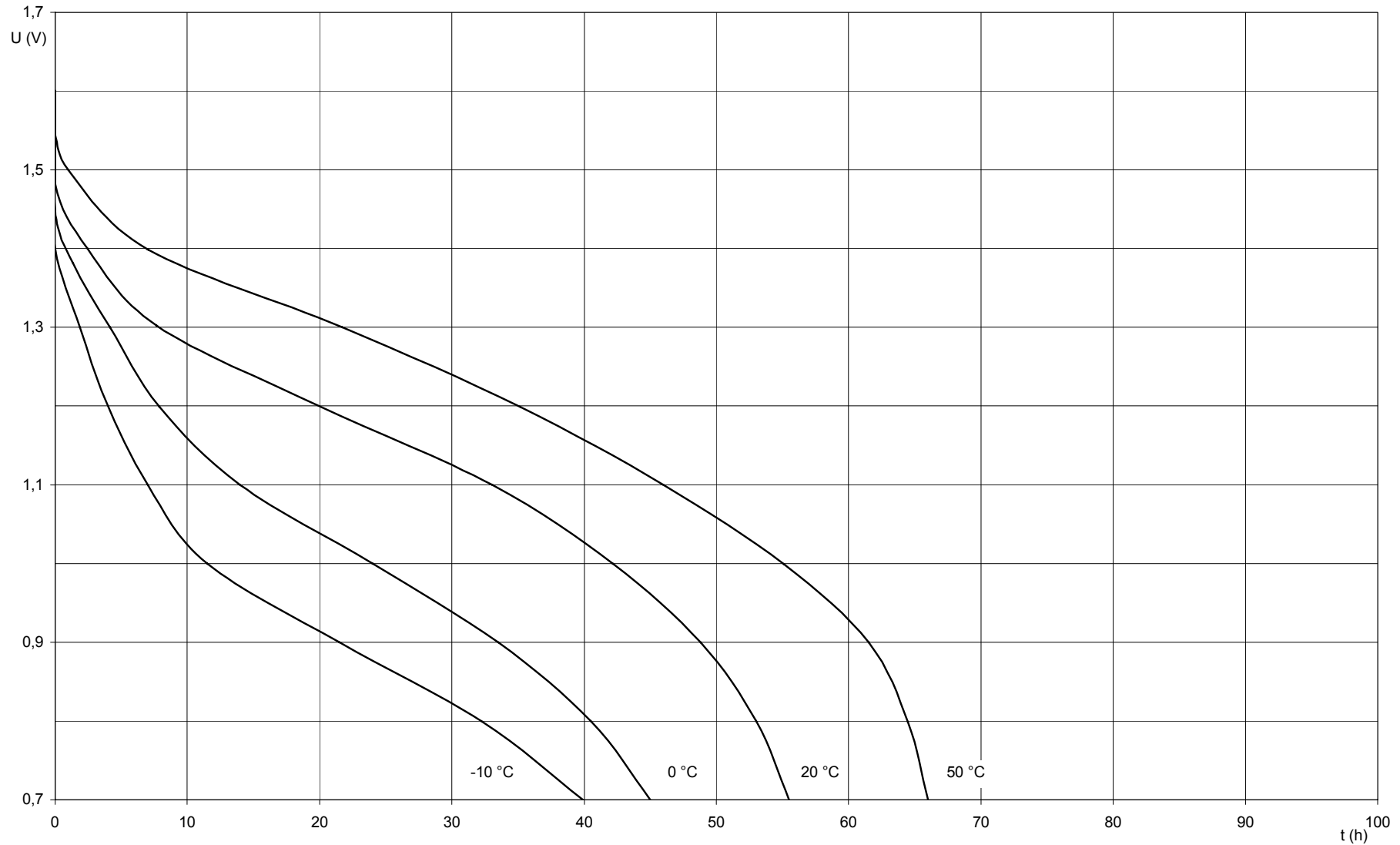
Discontinuous 2h/d



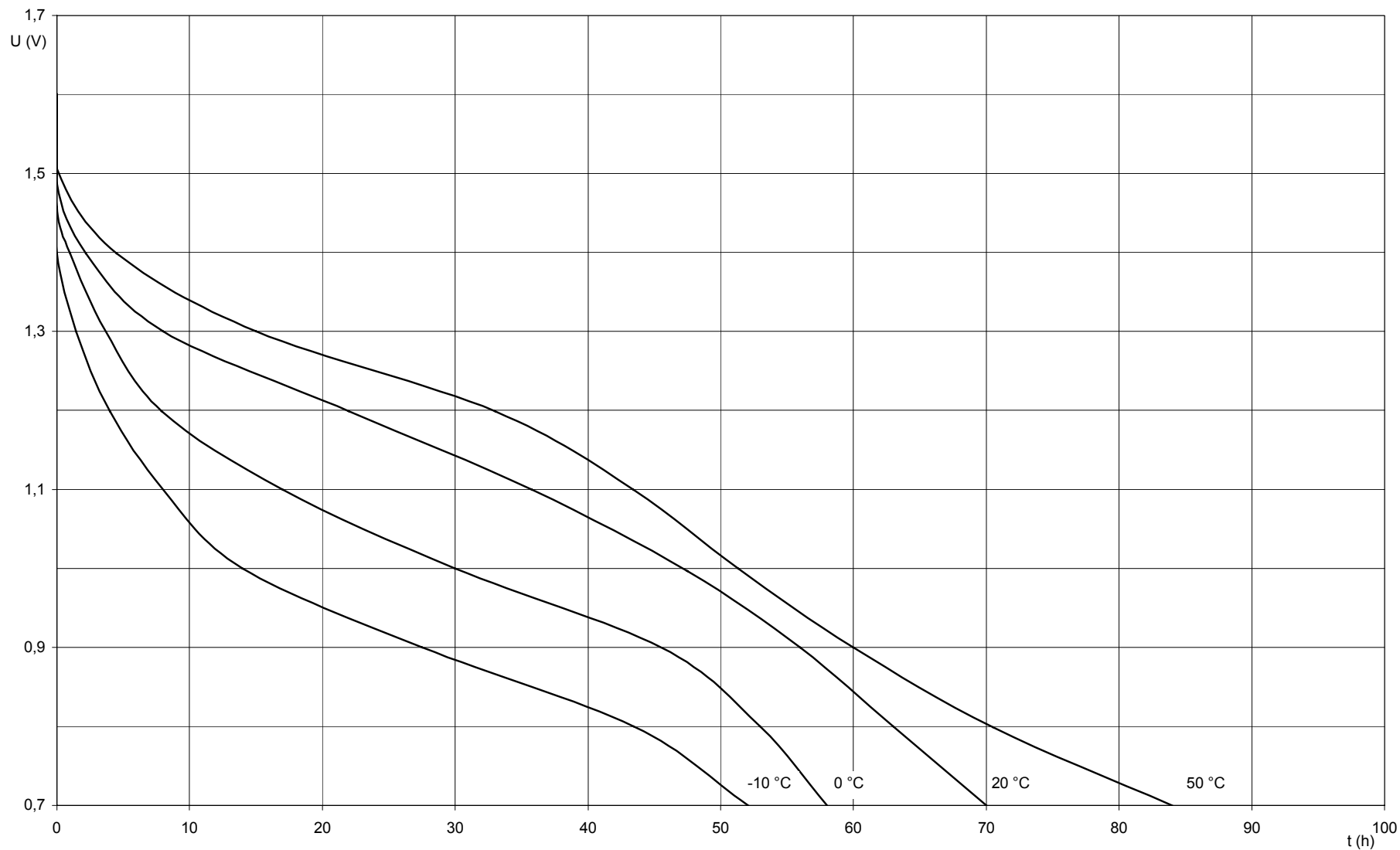
Internal Resistance at Continuous 121 Ω, 1s/h 2 Ω



Temperature Characteristic Continuous 5.1Ω



Temperature Characteristic Discontinuous 4h/d 5.1Ω



Short Circuit (Current and Temp. versus Time)

